



Sustainable Building Partners
Promoting Efficiency, Reliability, and Durability



Who We Are

Empowering High-Performance Building Design

Our vision at SBP is to improve the way people and communities live, work and play by overcoming the inefficiencies of traditional construction and design. We aim to:

- Promote corporate responsibility, energy efficiency and sustainable development
- Provide solutions tailored to each facilities location, site, market, and function
- Offer cost-effective, timely, and high-value engineering analysis to clients
- Facilitate dialogue between designers, contractors, and stakeholders through integrated design
- Remain current with the latest technologies and strategies
- Reduce greenhouse gas emissions (GHG) associated with the built environment
- Offer educational resources to all energy end-users
- Be a leader in the effort towards energy independence and resource preservation

A handwritten signature in black ink, appearing to read "M. Burtel".

A handwritten signature in black ink, appearing to read "Dan Kelly".



What We Do

Our Services

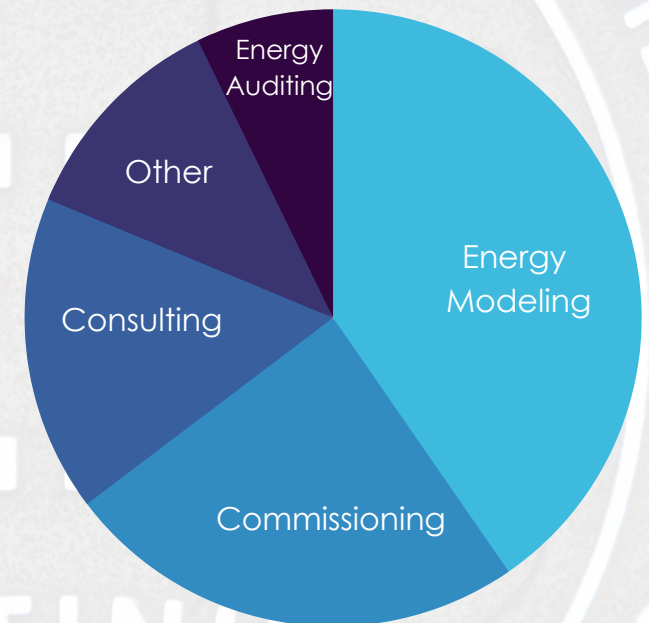
Sustainable Building Partners is a multidisciplinary firm committed to empowering high-performance building design suited for environmental, economic and human performance. Our experienced team collaborates with partners and clients to deliver efficiency, reliability, durability and sustained energy performance while promoting health, comfort and cost savings for end-users and communities.

SBP helps you create environments that work better in every way—efficient, brighter, healthier, more cost-effective, and delivering a higher performance. Our method brings precise technical analysis together with creativity, collaboration, and effective project management.

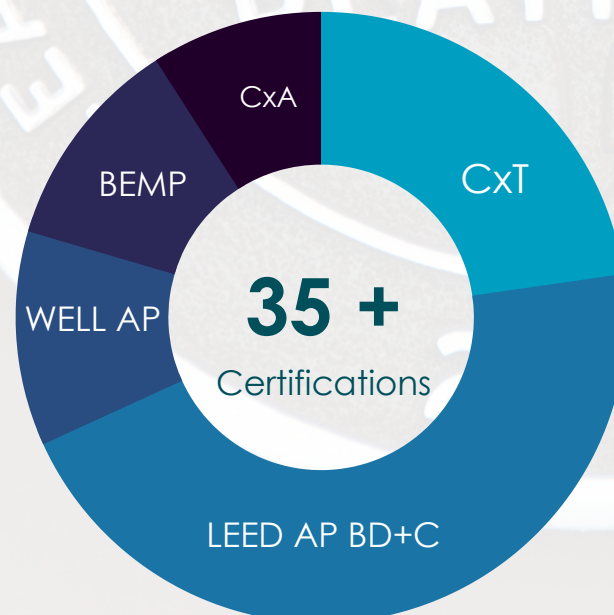
Firm Size & Structure



Our Projects



Certifications



Our Impact

Our vision at SBP is to improve the way people and communities live, work and play by overcoming the inefficiencies of traditional construction and design.

Our Project Typologies Include:



Multifamily



Commercial



Data center



Education



Medical



Civic



Net Zero



USGBC'S 2021
Sustainable
Business of the Year

231
LEED Certified
Activities



345
Certifications
Held by SBP
Employees

43.86 Million
Square Feet of
LEED Certified
Space



Our Services



Sustainable Programs Team

The Sustainable Programs team aims to have the largest possible impact on sustainability and wellness in the built environment. The Sustainable Programs team provides full consulting services in various green building rating systems and works alongside project teams to develop sustainability plans to solve complex problems. Made up of great communicators, critical thinkers, and problem-solvers, the Sustainable Programs team has a combined 73 years of industry experience, with team certifications in LEED AP BD+C, LEED AP IDC, LEED AP EBOM, LEED AP Homes, LEED AP ND, Fitwel Ambassador, and WELL AP

Services

- ▶ Sustainability Consulting
- ▶ Wellness & Fitwell Consulting
- ▶ Life Cycle Assessment & Embodied Carbon Assessment



Our Services

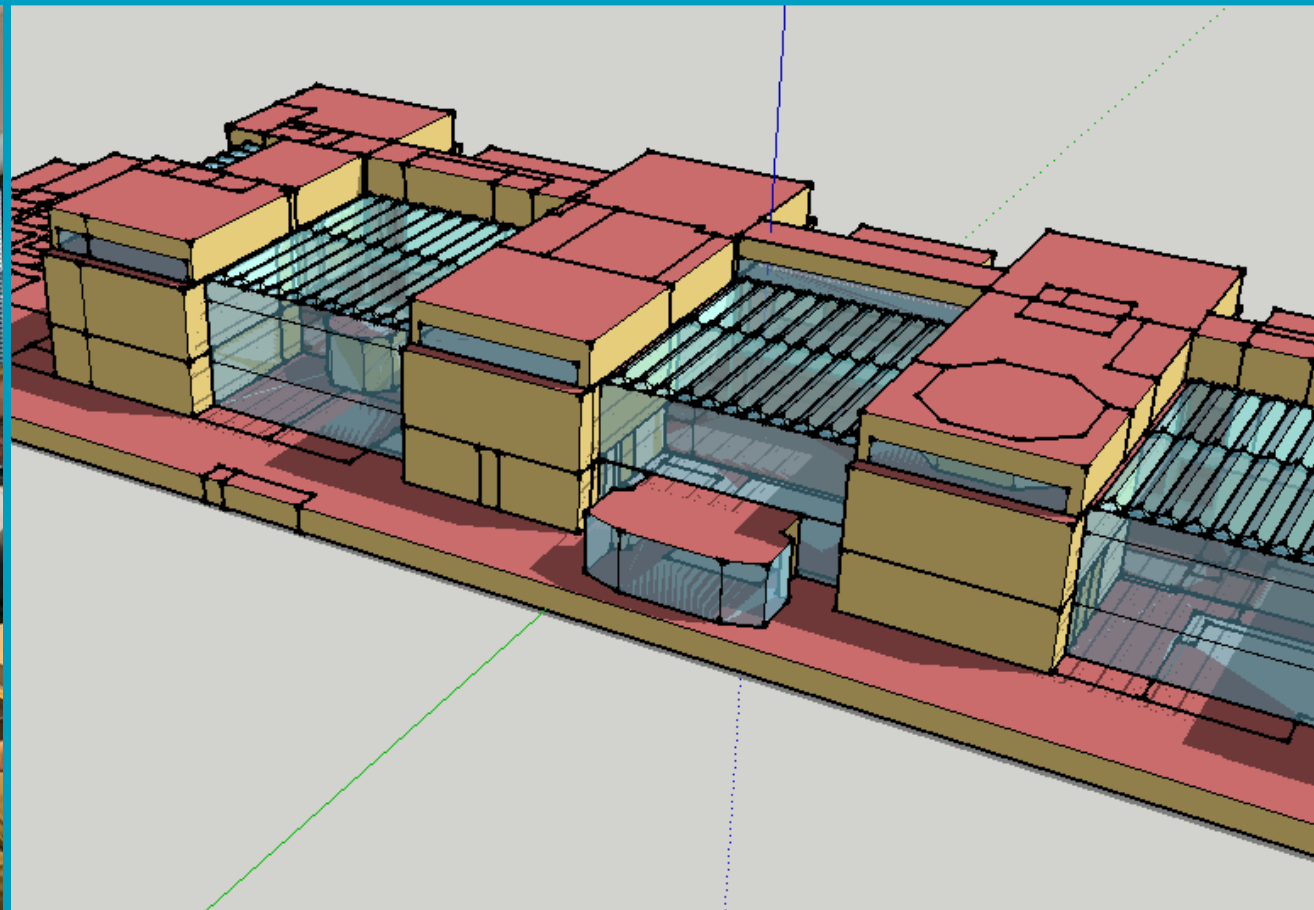


Building Performance Team

The Building Performance team aims to have the largest possible impact on building performance and operations. Through roughly 83 years of collective experience, the Building Performance team combines technical skill with creativity for numerous projects across the Mid-Atlantic region.

Services

- ▶ Development of energy models to help new projects optimize performance, save energy, reduce emissions, meet energy codes, obtain green certifications, and claim utility and government rebates
- ▶ Investment grade audits of existing buildings to reduce energy consumption, improve comfort, and help owners and operators think strategically about their investments
- ▶ Measurement and verification of existing facilities to verify performance and identify savings opportunities through strategic metering and real-world models



Our Services

Commissioning Team



The Commissioning Team aims to ensure the delivery of and sustained operation of high-performance buildings expected by facility owners. With a collective 65 years of industry experience, the Commissioning team identifies and resolves issues with a quicker response rate and issue resolution. The Commissioning team finds appropriate alignment between day-to-day operations, existing HVAC infrastructure, and sustained tenant comfort. Joint Commissioning team certifications include PE, EIT, CPMP, ACG, CxA, LEED Green Associates, and Well AP.

Services

- ▶ Fundamental Cx (LEED EA Prereq. 1)
- ▶ Enhanced Cx (LEED EA Credit 4)
- ▶ Retro-Cx (Utility Incentives, LEED, other)
- ▶ Investigation Cx (LEED-EBOM Credit 2.1)
- ▶ Implementation Cx (LEED-EBOM Credit 2.2)
- ▶ Ongoing Cx (LEED-EBOM Credit 2.3)



Our Work

Environmental, Economic, and Human Performance



American Geophysical Union

Located on Florida Avenue NW in Washington DC, this project received 96 points from the USGBC, awarding this building a LEED Platinum certification. A few cool features:

- ▶ Solar Photovoltaic Array
- ▶ Radiant Cooling System
- ▶ Hydroponic Phytoremediation Wall System, or Green Wall



Smithsonian Air and Space Museum

Located in Washington, DC this project has a target of receiving a LEED Gold certification. Over the next few years, the building will receive many sustainable upgrades.

- ▶ 23 galleries and spaces are being reimagined for immersive learning
- ▶ 1,400 new objects on display
- ▶ 7 years devoted to transforming the world's most popular museum



Princess Anne Middle School

Located in Virginia Beach, VA, this middle school is designed to be NetZero with EUI in the low 20's. The sustainable design features include an:

- ▶ Emphasis on daylighting and the addition of a green roof on top of the kitchen.
- ▶ A constructed wetlands area is planned to alleviate the issue of stormwater runoff.



Our People



Meet Our Team

Driven. Creative. Passionate.

Our People

At SBP, we're passionate about resource preservation, energy independence and economic prosperity. We are equally passionate about solving our partners' pressing energy efficiency and sustainability challenges related to the built environment. Our deep sense of integrity and ethical responsibility begins and ends with the individuals on our team.

Simply put, we have a group here at SBP who are dedicated to their craft. We set out to create a space that works to foster new ideas and learning, enhance the SBP "lifestyle." We invest in our people from physical to mental health and promote wellness lifestyle strategies

Giving Back:

- ▶ Special Olympics
- ▶ Capitol Area Food Bank
- ▶ USGBC Women in Green



Testimonials



"I have always been a nature enthusiast and working towards a more sustainable future is very important to me. Sustainable Building Partners has provided me with the opportunity of doing meaningful work with a supportive team that is passionate about working towards a greener future. The past two years here at SBP have been enjoyable and the collaborative environment has been extremely beneficial to my professional growth." - Nafisa Nalwala, Building Performance Specialist



"I have had the pleasure of working at SBP for almost 10 months now, joined the company in the middle of the COVID-19 pandemic, and couldn't be happier with my decision. The whole process, from interviews to onboarding, was virtual and one of the best I have experienced so far; especially the onboarding! A few of my best onboarding experiences included managers setting up the first few days' schedules for me to experience 'A Day in SBP', the virtual 'Meet and Greet' spread over few weeks to get to know every team member and pairing me with 2 of my colleagues as 'on-boarding buddies'. This was very thoughtful and gave me the framework to not only assimilate with the team but be a good team player." - Neha Vyas, Sustainable Program Specialist



After working at SBP for over five years, I feel extremely lucky to be part of such an amazing team. Mike and Dan's leadership shows their commitment to the business and also their employees. They strive to identify new projects in an ever-expanding industry that are both challenging and interesting to keep the team engaged and focused. The culture at SBP starts from the top down. The overall atmosphere is open to productive conversations and, no matter how busy someone may be, everyone is open to questions and collaboration. Given that SBP has three separate departments, it still feels like one cohesive team, all working together for a common objective. Since the teams have a variety of different backgrounds, we can bounce ideas off each other and work together to problem-solve and provide valuable feedback to our clients.

On top of the collaborative work environment, there are a variety of office games that encourage micro-breaks. I enjoy playing a quick game of darts or corn hole around lunchtime for a nice break in the middle of a busy work day. This is also a great opportunity to bond with coworkers I otherwise might not work with on a daily basis. During the COVID-19 pandemic, the culture and atmosphere of SBP have been more important than ever. With everyone working from home, it has been important to keep communication channels open, both to encourage remote collaboration and also to help everyone cope with such challenging times. Whether it is a work question or just a general discussion, it is great to have so many coworkers I feel comfortable talking to on a regular basis.

The quality of the work is above and beyond what I see and hear about in the industry and all of us at SBP truly pride ourselves on this. We strive to always challenge ourselves with developing high-quality deliverables for our clients and always being available to address their questions in any way we can. As a consultant, I put a lot of emphasis on client interactions and developing relationships with people in a variety of different positions. Everyone at SBP embraces this mentality and our quality of work really speaks for itself. - Paul Brefka, Sustainable Project Manager

Our Benefits



Employee Perks

- ▶ 8 Paid Holidays
- ▶ Retirement Savings Account
- ▶ Dog-friendly office
- ▶ In-Office Wellness Room
- ▶ PTO starting at 15 days/year
- ▶ Commuter Benefits Program
- ▶ Hybrid WFH Policy
- ▶ Fuze Ball Table & Office Games



Contact Us

Corporate Headquarters

2701 Prosperity Avenue
Suite 100 Fairfax, VA 22031

 <http://www.sustainbldgs.com/home>

 <https://twitter.com/sustainbldgs>

 <https://www.linkedin.com/company/sustainbldgs/>

 <https://www.facebook.com/SustainableBuildingPartners>

 https://www.instagram.com/sustainable_building_partners/

